



Montageausrüstung
Assembly Equipment



Montage am Kabel / Assembly on the cable

Montage an Freileitungen / Assembly on overhead lines

Erdungs- und KurzschlieÙvorrichtungen / Earthing and short circuiting devices

Schneiden / Cutting

Pressen / Press

Zubehör / Accessory

the strong
Partner
for your
Safety

maintenance tools

assembly tools

working umbrella

working umbrella, cotton

- brown colored
- water-repellent and rot-proof impregnated
- for Ø 2.50 m cotton fabric approx. 200 g/m²
- for Ø 3.00 m cotton fabric approx. 300 g/m²
- for 2.50 m x 2.50 m cotton fabric approx. 350 g/m²
- for 3.00 m x 2.00 m cotton fabric approx. 350 g/m²
- Earth spike for all screen sizes



Description	Material number
working umbrella 2,0 m, brown, cotton	8101000
working umbrella 2,5 m, brown, cotton	8101250
working umbrella 3,0 m, brown, cotton	8101300
Rectangular working umbrella 2,50 m x 2,50 m, brown, cotton	8101251
Rectangular working umbrella 3,00 m x 2,00 m, brown, cotton	8101301
earth spike for working umbrella	8101001
storage bag for umbrella up to 3 m	8101002

working umbrella, PVC

- PVC B1, flame resistant
- white, subdivided into 10 sections
- waterproof
- earthing spike for all umbrella sizes



Description	Material number
working umbrella 2,0 m, white, PVC B1 flame resisant	8111000
working umbrella 2,5 m, white, PVC B1 flame resisant	8111250
working umbrella 3,0 m, white, PVC B1 flame resisant	8111300
Rectangular working umbrella 3,00m x 2,00m, white PVC flame resistant	8111301
earth spike for working umbrella	8101001
storage bag for umbrella up to 3 m	8101002

tents

cable solder tent with steel tube frame

- on both sides PVC-coated PES-fabric
- ca. 600 g/m², rot resistant
- steel framework 27/2 mm grey painted, foldable
- color white with circulating warning strip



Description	Material number
cable soldering tent L200 x W200 x H200	8102200
cable soldering tent L250 x W250 x H190	8102250
cable soldering tent L300 x W250 x H190	8102300

assembly tent 5-seconds tent

- small, handy, well stowable
- assembling and dismantling in seconds by only one person
- self supportive construction - no loose sticks
- fastness to light for electrical work, installation of fiber-optic cable, maintenance of telecommunication installations
- won't be heavier through rainfall
- rain-/coldness protection
- simple cleaning with high pressure cleaner
- light and robust solution
- one grey reflective strip for additional safety
- no loose parts, just one bag
- flame-resistant blacket white with yellow brim



The assembly tent be suitable for the different kind of work, for example at switch- and control boxes, sleeves assembly, for ground- and conductor work, waste water pumps and inspections, sewer and road construction work.

The assembly tents are available in two standard- basic forms: tapered roof (TE) and flat roof (KE)

The flat roof type is available as cube - and cuboid version in different measurements

The peaked roof tents have in the back at the standard version an extra zip, which enables to cover a larger working space by opening und putting on an additional tent. For the flat roof tents with ca. 1m length the additional zip is optionally as special function available



Description	Material number
assembly tent 5-seconds tent flat roof L180 x W180 x H200	8102140
assembly tent 5-seconds tent peaked roof L180 x W180 x H200	8102181
assembly tent 5-seconds tent flat roof L250 x W180 x H200	8102182
assembly tent 5-seconds tent flat roof W210 x L210 x H200	8102210
assembly tent 5-seconds tent flat roof L250 x W250 x H200	8102253
assembly tent 5-seconds tent peaked roof L180 x W180 x H170	8102180
assembly tent 5-seconds tent peaked roof L250 x W200 x H190	8102252

Tension belt for assembly tent

- Tension straps for assembly tents
- with 2 hooks for fastening
- length 2,5 m



Description	Material number
Tension straps for tents with 2 hooks, length 2,50 m	8102001

Magnetic mount

- for the safe fixing of the tents on metal surfaces.
- suitable for the plate pegs
- Eyelets 8 mm
- Magnet 60 mm



Description	Material number
	8102002

Plate Herring 200 mm

- suitable for the magnetic holder
- Length 200 mm



Description	Material number
Plate Herring 200 mm	8102003

line stretcher clamp

line stretcher clamp

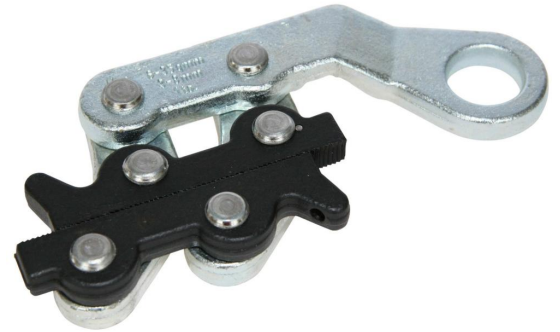
- for alu- or steel/alu cable
- autonomous holding via spring effect
- galvanized



Description	Material number
line stretcher clamp 25 - 35 mm ² aluminium/steel	8106040
line stretcher clamp 16 - 70 mm ² aluminium/steel	8106041
line stretcher clamp 50 - 150 mm ² aluminium/steel	8106042

line stretcher clamp

- for copper- and steel cable
- jaws are hardened and brunished



Description	Material number
line stretcher clamp 1 - 16 mm ² copper/steel	8107050
line stretcher clamp 6 - 35 mm ² copper/steel	8107051
line stretcher clamp 16 - 70 mm ² copper/steel	8107052
line stretcher clamp 50 - 150 mm ² copper/steel	8107053

line stretcher clamp

- for insulating overhead lines
- galvanized
- autonomous holding
- 2 x 25 - 70 mm²
- diameter 14 - 36 mm



Description	Material number
line stretcher clamp / insulated overhead lines, 4 x 35 - 70 mm ²	8108070

ISO line stretcher clamp

- for insulated overhead lines
- jaws out of aluminium-cast
- for conductor bundle of 4 x 25 x 50
- or 4 x 70 x 95 + 35 mm² (street lighting)



Description	Material number
ISO line stretcher clamp 2,2 kg for insulated overhead line	8150028
ISO belt stretcher clamp 4,6 kg for insulated overhead line	8150036

uptake roll

uptake roll with mount bracket

- roller out of alu with brass brushing
- with closed bracket, opening at the side
- with wing nut and strong mount bracket
- galvanized
- roll-diameter 115 mm bzw. 200 mm



Description	Material number
uptake roll up to diameter 16 mm with closed bracked	8110016
uptake roll up to diameter 29 mm with closed bracked	8110029

uptake roll with rotatable load hook

- roller out of alu with brass brushing
- instead of mount bracket with rotatable load hook and backup
- roll-diameter 115 mm or 200 mm



Description	Material number
uptake roll up to diameter 16 mm with rotary load hook	8111016
uptake roll up to diameter 29 mm with rotary load hook	8111029

uptake roll for insulated conductor

- for insulated conductor and conductor bundles
 - up 4 x 95 mm²
 - plastic roll
 - incl. carabiner
- 1 1,0 Stck. 010034 : null null
2 1,0 Stck. 8149496 : plastic pulley ø 150 mm / 160 mm drilling hole = 18,2 mm



Description	Material number
uptake roll, roll inner diameter 50 mm	8149495

pulleys

pulley, complete

- with rotatable forged safety hook and hook protection
- galvanized, solid steel case
- with 3 adjacent rollers, out of plastic
- brass rollers on request
- 20 m hemp rope



Description	Material number
pulley, polyamided roll 40mm, 6 mm x 20 m hemp rope, 100kg	8109100
pulley, polyamided roll 50mm, 8 mm x 20 m hemp rope, 150kg	8109150
pulley, polyamided roll 60mm, 10 mm x 20 m hemp rope, 200kg	8109200

Chain-lever hoist

- proven especially in confined spaces
- light weight and low overall height
- Operation by swinging the ratchet lever back and forth

Switching between lifting and lowering is done by a switch on the Ratchet arm mounted small lever.

standard equipment:

- lever, housing cover and hand wheel
- sheet steel housing
- Chain release, the chain is released by turning the hand wheel
- or moved by pulling on the chain
- Gearbox with needle bearing, for smooth running and low power consumption



Description	Material number
chain lever hoist 750 kg	8112750
chain lever hoist 1500 kg	8112150

climbing iron

climbing iron

- climbing iron according to DIN 48345
- for wooden poles with variable diameter
- with 3 peaks



Description	Material number
climbing iron for wooden poles diameter, 90 - 180 mm	8124180
climbing iron for wooden poles diameter, 150 - 240 mm	8124240
climbing iron for wooden poles diameter, 200 - 300 mm	8124300
climbing iron for wooden poles diameter, 230 - 340 mm	8124340

alu cleaning brush for lines

- to remove oxide and soil layers of lines
- out of 2 anodized, connected by hinges, aluminium half-shells
- bristles out of V2A-steel, length ca. 120 mm
- for cable diameter 10 to 40 mm, or bigger
- 2 different bristles for different cable types
- blue bristle: for aluminium lines
- red bristle: for copper lines



Description	Material number
line cleaning brush for aluminium line, blue	8140005
line cleaning brush for copper line, red	8140006

earthing and short-circuiting devices

earthing and short circuit device, set

- according to DIN VDE 0683 part 100 (EN/IEC 61230)
- for earthing and short circuit elektronical installations on the working position as potential equalization according DIN VDE 0105 part 100 (EN 50110)
- short circuit current with 25 mm² 4,9 kA / 1 s

consisting of:

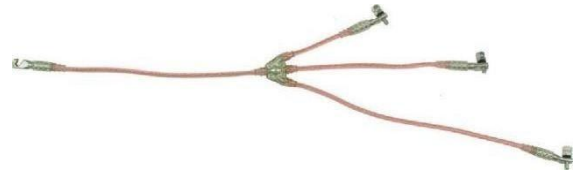
- 2 pce earthing and short circuit devices, 25 mm², hook cable lug
- 2 pce earthing clamp mit flexible turning handle
- 1 pce earthing handle with double function
- 3 pce earthing cartridge NH 00
- 6 pce earthing cartridge NH 1-3
- 3 pce earthing bits E33, screw thread insulated
- 1 pce tin case, 440 x 330 x 66 mm



Description	Material number
earthing and short circuit device, set	8148000

earthing and short circuit device with hook cable lug

- for cable distribution box
- 2 possibilities to mount the earthing clamp (81486006 or 8148607)
- earth cable 500 mm, short circuit cables 200 mm, 400 mm and 600 mm
- short circuit current: 16 mm² 3,2 kA / 1 s
25 mm² 4,9 kA / 1 s
35 mm² 6,9 kA / 1 s



Description	Material number
earthing device 25 mm ² with earth sided hook cable lug	8148603
earthing device 35 mm ² earth sided hook cable lug	8148604
earthing clamp with flexible turning handle und two adjust possibilities	8148606
earthing clamp, with wing screw	8148607

earthing and short circuit device with flexible turning handle

- for cable distribution box
- turning handle with two adjust possibilities (45° and 90°)
- clamping range up to 20 mm²
- earth cable 500 mm, short circuit cables 200 mm, 400 mm and 600 mm
- short circuit current: 25 mm² 4,9 kA / 1 s
35 mm² 6,9 kA / 1 s



Description	Material number
earthing device 25 mm ² , with turning handle	8148600
earthing device 35 mm ² , with turning handle	8148601

earthing and short circuit device, earthing lug with spring preload

- for house entrance panels
- clamp range up to 24 mm
- earth cable 280 mm, short circuit cables each 140 mm
- mounting via turning handle (Nr. 8149144)
- short circuit current at 16 mm² 3,2 kA / 1 s



Description	Material number
earthing device 16 mm ² with spring preload	8148605

earthing cartridge for earthing device

- M10 connecting to insert to NH-Fuse lower sections via earthing handle with double-function
- short circuit current 6,9 kA / 1 s



Description	Material number
earthing cartridge NH 00	8148609
earthing cartridge NH 1-3	8148610
earthing cartridge NH 4a	8148611

earthing bits for earthing device

- M10 connecting to insert to screw-fuse lower sections via earthing handle with double-function
- short circuit current 4,9 kA / 1 s



Description	Material number
earthing bit E27, screw thread insulated	8148612
earthing bit E27, screw thread conducting	8148614
earthing bit E33, screw thread conducting	8148615

earthing handle with double-function

- to insert earthing cartridges or earthing bits with M10 connecting
- to connect the earthing device to cartridges (AF 19)
- length: 355 mm



Description	Material number
earthing handle with double function	8148608

tin case for earthing device

- to storage earthing and short circuit devices and accessory



Description	Material number
tin case, empty 380 x 260 x 80 mm	8148616
tin case, empty 440 x 330 x 66 mm foam insert	8148617

earthing and short circuit device set for streetlights

- for E14 safety screw insets
- for distribution board of streetlights
- aluminium adapter for E27 to E14 thread
- max. pre-fuse 32 A - circuit breaker (B characteristic)
- 3 permanently attached E14 safety screw insets and earthing clamp with spring preload
- clamping area up to 24 mm
- set consists of:
 - 2 earthing and short-circuit devices with E14 safety screw insets
 - 6 E27 / E14 adapter
 - 1 fitting screw wrench
 - 1 turning handle with flexible spindle
 - 1 plastic case



Description	Material number
earthing and short circuit device street lightning - complete set	8149140
earthing and short circuit device	8149141
adapter E 27 / E 14	8149142
fit bolt wrench	8149143
turning handle for earthing clamp	8149144
storage bag for earthing and short cut device	8149145

earthing and short circuit device for house connection box

- 3 short circuit cartridge, size 00
- 1 earthing cable and short circuit cable, cross section 25 mm² -ESUY
bough length 3 x 200 mm
earth cable length 1 x 300 mm
- 1 earthing clamp to install to bars up to 12 mm
- short-circuit current 4,9 kA / 0,5 s
- connection with hot stick Art.-Nr. 8 149 500



Description	Material number
earthing and short circuit device, house connection box , NH 00	8149225

earthing and short circuit device LV distributions

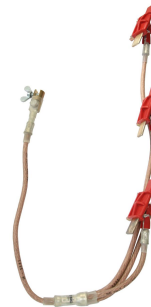
- 3 short circuit cartridge, size 00
- 1 earthing cable and short circuit cable, cross ection 25 mm² -ESUY
bough length 250/ 500/ 750 mm
earth cable length 1 x 300 mm
- 1 earthing clamp to install to bars up to 12 mm
- short-circuit current 4,9 kA / 0,5 s
- connection with hot stick Art.-Nr. 8 149 500



Description	Material number
earthing and short circuit device low voltage distributer, NH 00	8149325

earthing and short circuit device with short circuit cartridges

- to handle with for NH low-voltage handhold
- for sizes 1; 2 and 3
- short-circuit current
25 mm² 5 kA / 1s
35 mm² 7 kA / 1s



Description	Material number
earthing and short circuit device 25 mm ² , NH 1 / 2 / 3	8149025
earthing and short circuit device 35 mm ² , NH 1 / 2 / 3	8149035

earthing and short circuit device with short circuit cartridge

- earthing clamp complete insulated with moveable handle
- to handle with NH low voltage handhold
- for sizes 1; 2 and 3
- other sizes on request
- short-circuit current
25 mm² 5 kA / 1s
35 mm² 7 kA / 1s



Description	Material number
earthing and short circuit device with moveable handhold 25 mm ² , NH 1 / 2 / 3	8149125
earthing and short circuit device with moveable handhold 35 mm ² , NH 1 / 2 / 3	8149135

hot stick

- ball catch to install the earthing clamp
- to connect short circuit parts



Description	Material number
hot stick with ball catch	8149500

coupling device, connection of 2 LV-Systems

- to handle with NH low-voltage handhold
- for sizes 1; 2 and 3
- connection wire out of OZONFLEX-rubber
- 1000 mm length



Description	Material number
coupling device to connect 2 low voltage systems	8149600

short circuit cartridge

- short circuit cartridge can be connected with a line
- can serve as coupling of two low voltage systems



Description	Material number
short circuit cartridge 0,25 kg	8149050

short circuit device LV overhead lines

- with independent spring terminal
- clamping range 3 - 180 mm diameter
- per clamp 1 copper short-circuit cable highly flexible
- PVC insulated
- section 16 mm²
- short-circuit current 4,5 kA / 0,5 s



Description	Material number
short circuit device 4-pole	8114004
short circuit device 5-pole	8114005
short circuit device 6-pole	8114006

earthing and short circuit device MV-Systems

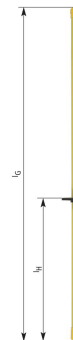
- 3 universal phase-screw-clamps MT-1921, top
- 1 universal earthing clamp
- 1 earthing- and short circuit cable
- bough lengths 600 mm, earth-cable lengths 1800 mm
- phase-fix-point orbicula 25 / 30 mm diameter
- short circuit cable 120 mm² / earth cable 50 mm²
- short circuit current 23,7 kA / 1 s IK
- other sizes on request



Description	Material number
universal short circuit device 120 mm ² / 50 mm ²	8148500

earthing stick

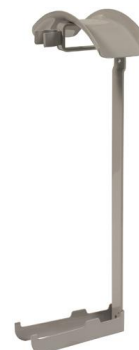
- earthing stick made out of GRP-pipe 36 mm diameter
- with bayonet catch



Description	Material number
earthing stick 1000 mm GRP - tube	8148301
earthing stick 1500 mm GRP - tube	8148302

wall mounting

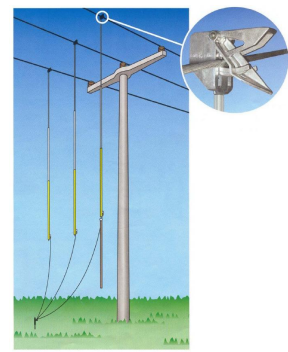
- to uptake device and earthing stick



Description	Material number
wall mounting for device and earthing stick	8148400

earthing and short circuit device MT-500-P

- MT-500-P earthing- and short-circuit device
to operate from the ground, for 3 phased medium voltage overhead lines
- earthing- and short-circuit device for use at the workplace
 - to attach to any place between two poles
 - clamps lock automatically by hanging up
 - suitable for maximal short circuit current



- $I_k = 6,9 \text{ kA } 1\text{s}$ with short-circuit cables 35 mm^2
- suitable for overhead line heights up to 10,5 m and conductor diameters up to 22 mm
 - available with short-circuit cable up to 35 mm^2
- normal version complete like described below.
- 3 telescopic earthing tubes out of special aluminium, length continuously variable adjustable between 2,25 m and 6 m, with self locking clamps, round conductors up to 22 mm diameter
 - 3 earthing- and short-circuit cable, highly flexible, transparent wrapped, cross section selectable 25 mm^2 or 35 mm^2 , length 6 m summarized to 1 earthing clamp MT-480
 - 1 stick earther out of forged steel
 - 1 earthing stick out of glass-fibre reinforced polyester tube with special coupling, length 2 m
 - 1 extension stick out of glass-fibre polyester tube
 - 1 case for admission of the earthing tubes, of the stick earther and the earthing- and extension stick

Description	Material number
earthing and short circuit device MT-500-P three-phase 35 mm^2	8114003

voltage detection-head for hot stick

- 10-30 kV
- suitable to hot stick with gear coupling
- used for overhead lines and indoor
- hook electrode to hang in overhead lines
- with insulated telescopic bar
- can be used from the ground in the overhead line via insulated telescopic rod

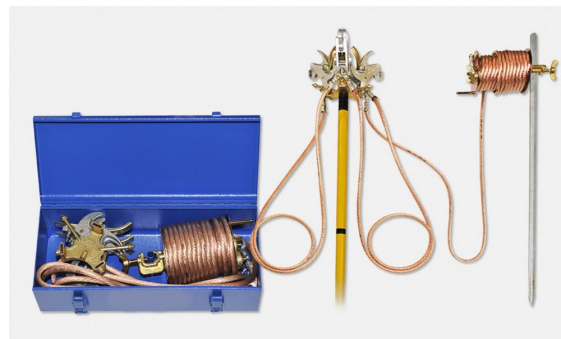


 36 kV

Description	Material number
voltage detector head 10-36 kV	8114010
telescopic rod, insulating up to 36 kV with gear coupling and scale up to 10,6m	7510020
storage bag 1,8 m with pocket for telescope measuring rod	7510021
hot stick working heads 1,5 m locking 36 kV	7480052
hot stick working heads 2,0 m locking 36 kV	7480056
hook electrode screw-on	8114015

earthing and short circuit device for 3-phase MV overhead lines

- 3 spring terminals with highly flexible copper short-circuit cables, PVC insulated
- dismantlable operation rod 2 m
- distance between terminals 2,25 m
- steel sheet case 425 x 200 x 150
- copper earthing cable, PVC coated, 16 m on reel
- maximal short-circuit current:
Ik = 4,9 kA 1s with short circuit cables 25 mm²
Ik = 6,9 kA 1s with short circuit cables 35 mm²



Description	Material number
earthing and short circuit device three-phase 25 mm ²	8148025
earthing and short circuit device three-phase 35 mm ²	8148035

cable processing tools

cable stripping pliers

- for cable diameter from 20 mm up to 54 mm
- with 4 cutting wheels for round-cut (RC), 2 moveable
- 1 cutting wheel for longitudinal cut (LC)
- double beads to protect the blades
- double-joint and alignment of the blades allow to let go of the hand from the cable
- base body out of aluminium and stainless steel, handles black PVC
- cutting wheels with other depth of cut on request



Description	Material number
cable stripping plier, RC 2,0/LC 2,5 for diameter 20 - 54 mm	8115010
cable stripping plier, RC 2,0/LC 2,5 for diameter 20 - 54 mm	8115011
spare-kit, 4 cutting wheels for RC (2,0 mm), 1 cutting wheel LC (2,5 mm)	7060008
spare-kit, 4 cutting wheels for RC (2,0 mm), 1 cutting wheel LC (2,8 mm)	7060009

cable stripping tool

- for removing insulation coating on cables from \varnothing 25 mm
- adjustable cutting depth 0 - 5 mm
- changeable blade
- suitable for longitudinal and circular cuts
- substitute blade also for insulated conducting



Description	Material number
stripping tool for diameter from 25 mm IEC 60900:2004	8135180
substitute blade for cable stripping tool	8135171

medium voltage case- set

complete assembly case consisting of:

- sheath cutter GB-M20 with plastic insert
- peeling device GB-P20 with silicone tube
- universal edge breaker
- hexagon socket wrench for changing blade
- manual
- case with foam insert
- cuts VPE-outer sheath and insulation layer sheath
- exact break possible for 28 mm strength
- on round conductor up to \varnothing 25 mm



Description	Material number
MV case - set, plastic transport case	8152000

sheath cutter GB-M20

- cuts VPE-outer sheath and insulation layer sheath
- exact break possible of the outer sheath
- for single conductor cable 10-30 kV
- between 15 and 50 mm cable diameter



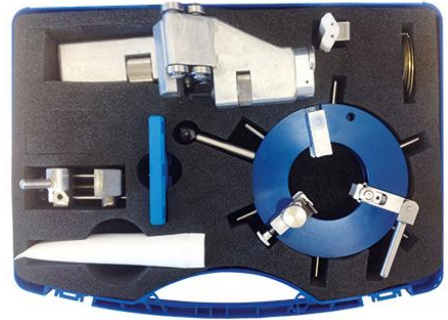
Description	Material number
sheath cutter GB-M20 35 - 500 mm ²	8152001
substitute blade 10 mm for sheath cutter GB-M20	8153004
substitute blade set 10mm (5 pieces) for sheath cutter GB-M20	8153002

medium voltage case - set, with GB-M 30

- cutting and stripping with only one device
- cuts VPE-outer sheath and insulation layer sheath
- exact break possible of the outer sheath
- for single conductor cable 10-30 kV, especially 30 kV
- between 32 and 70 mm cable diameter

Content:

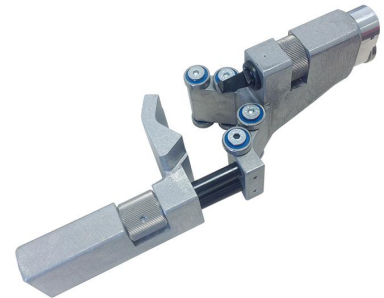
- sheath cutter GB-M 30
- replacement blade
- prism GB-M 30-S9
- peeling device DB-DS 9
- stop ring set GB-ASL 20-S9/2
- edge breaker GB-KG 05-5
- case with foam insert



Description	Material number
MV case - set, plastic transport case with GB-M 30	8153001

sheath cutter GB-M30

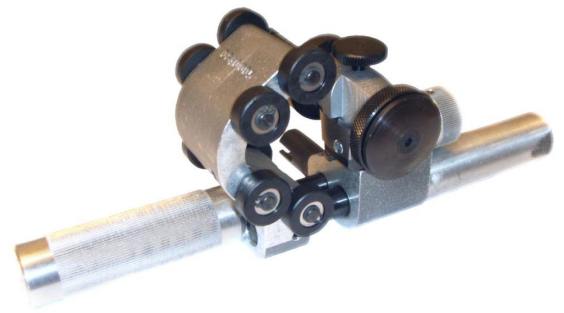
- cutting and stripping with only one device
- cuts VPE-outer sheath and insulation layer sheath
- exact break possible of the outer sheath
- for single conductor cable 10-30 kV, especially 30 kV
- between 32 and 70 mm cable diameter
- weight: 1.5 kg
- dimensions: 24 x 10 x 10 cm



Description	Material number
sheath cutter GB-M30, 32 - 70 mm	8152006
prism for cable up to 20 mm	8152007
replacement blade set for GB-M30 (5 pieces)	8153008
replacement blade for GB-M30	8153007
universal case, for GB-M30	8153013

peeling device GB-L20

- for VPE cables from 35 mm² 10 kV up to 500 mm² 30 kV
- without previous grease
- automatic feed during the peeling



Description	Material number
peeling device GB-L20	8152220
substitute blade set , 5 units for peeler device GB-L20	8153006
null null	8153009

peeling device GB-P20

- for controlled peeling of the tough extruded outside conduction layers on medium voltage cable with 10 - 30 kV
- field of work 10 - 50 mm cable diameters
- start with the peeling on the end of the cable, the take off measure is ca. 25 mm
- through simple turning around the hand crank , you can also start in the middle of the cable, the take off measure is then 10 mm
- consist of hard metal, polished
- peeling depth can be manually adjusted, 0 - 1,2 mm in 0,1 mm steps
- automatic work feed
- on the end of the peeling operation the circle cut will be reached by simple moving back of the glide jaw



Description	Material number
peeling device GB-P20 35 - 500 mm ²	8152002
substitute blade for peeling device GB-P20	8153005
substitute blade set 5 piece for peeling device GB-P20	8153003

peeling device GB-DS2

- universal peeling device for the tough extruded outside conduction layers
- optimal work feed through 3 guide jaws
- Feinjustierte Einstellung der Schneidtiefe des Schälmessers
- for cable diameter 34 – 60 mm
- weight: 1,5 kg
- dimensions: 20 x 10 cm



Description	Material number
peeling device, GB-DS2, 34 – 60 mm	8153010
replacement blade for GB-DS2	8153011
stop ring set for GB-DS2 (8 pce.)	8153012
universal case, for GB-M30	8153013

round peeling device

- for peeling the outer conducting layer of plastic cables
- conducting layer thickness up to 1,2 mm can be peeled
- adjustable stop can be equipped, if required
- 10 kV-cable up to 25 mm²
- 30 kV-cable up to 500 mm²
- up to 52 mm cable diameter
- delivered with case for transport



Description	Material number
round peeling device incl. stop ring and silicone	8152400
replacement blade	8152401

lengthwise peeling GB-HS20

- for controlled peeling of outer extruded conduction layers
- for sector shaped cable
- through lengthwise cut direction
- peeling of EPR-power cable with rubber insulating partially possible
- maximum cutting depth 0,6 mm up to 0,7 mm
- for cable diameter 10 mm up to 50 mm
- with wheel on the underside



Description	Material number
lengthwise peeling device for conduction layer GB-HS20	8152410
replacement blade for duct GB-HS20	8152411

silicone for peeling devices

- 100 ml per tube



Description	Material number
silicone for peeling device 100 ml / tube	8152005

edge breaker 35° for 10 - 30kV-cable

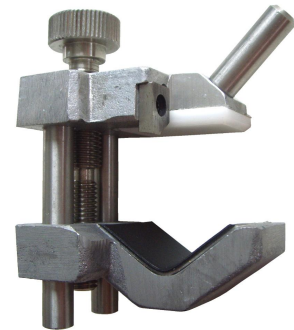
- tool for edge breaking
- easy to handle
- prevents damage to cable



Description	Material number
edge breaker 16-50 mm ² (KG 0,5)	8152010
edge breaker 70-95 mm ² (KG 0,8)	8152020
edge breaker 120-150 mm ² (KG 1,0)	8152030
edge breaker 185-240 mm ² (KG 2,0)	8152040

edge breaker GB-KG05-3

- universal edge breaker
- for touching the contrasting VPE-insulation
- variable to use for all standard cross-sections of medium voltage cable up to 300 mm²
- working field 15 - 40 mm
- by using the edge cutter the out slide-forces will be reduced to a minimum and a damage of the cable set will be avoided



Description	Material number
edge breaker up to 300 mm ²	8152004
replacement blades for edge breaker	8154008

edge breaker GB-KG05-5

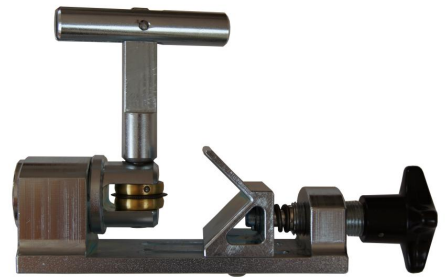
- universal edge breaker
- for touching the contrasting VPE-insulation
- variable to use for all standard cross-sections of medium voltage cable up to 800 mm²
- working field up to 60 mm
- by using the edge cutter the out slide-forces will be reduced to a minimum and a damage of the cable set will be avoided
- weight: 0,2 kg
- dimensions: 9 x 4 x 7 cm



Description	Material number
edge breaker GB-KG05-5 up to 60 mm	8152008
replacement blades for edge breaker	8154008
universal case, for GB-M30	8153013

cutting device for N(A)KLEY cable

- cutting device for the Rheydter-cut on alu-sheath of NAKLEY-cable
- with cutting depth limit to avoid cable damage
- for aluminium sheaths up to a maximum diameter of 35 mm
- angle adjustment of the cutting wheel possible 45°
- integrated damping system evens small irregularities of the aluminium
- special designs on request



Description	Material number
cutting device for NAKLEY cable	8118000

Paper cutter for NAKLEY cables

- Cutter for removing the paper layer on NAKLEY cables
- length: 190 mm
- Application range: 13 - 55 Ø



Description	Material number
Paper cutter SPL EXRM 1004 null	8148401

punch pliers for N(A)KLEY cable assembly

- to punching the hole in to the alu sheath for neutral conductor-connection
- 14 mm hole-diameter
- other diameter on request



Description	Material number
punch pliers for NAKLEY cable	8152600

seam pliers

- straight jaw width 60 mm
- suitable to smooth the alu sheath of NAKLEY cable



Description	Material number
seam pliers to smooth the aluminium sheath	8152601

sheet pliers

- for straight continuous and figure cuts
- blades polished
- for sheet thickness up to max. 1,0 mm at a strength 600 N/mm²
- black coated, handle with blue PVC-coat



Description	Material number
sheet pliers 260 mm	8152602

N(A)KLEY-case

content:

- 1,0 Stck. 8109010 : plastic-case, 452 x 383 x 144 mm, black, empty, for N(A)KLEY-
- 1,0 Stck. 8118000 : cutting device for NAKLEY cable
- 1,0 Stck. 7116205 : plier for NAKLEY-wires , 200 mm
- 1,0 Stck. 8152600 : punch pliers for NAKLEY cable
- 1,0 Stck. 8152601 : seam pliers to smooth the aluminium sheath
- 1,0 Stck. 8152602 : sheet pliers 260 mm
- 1,0 Stck. 7418140 : wedge, length: 140 mm, red
- 1,0 Stck. 050006 : foam insert for NAKLEY- case



Description	Material number
plastic-case equipped with tools for processing oil paper insulated cables	8109000

torque amplifier DMV 65

usage:

- with cordless driver
- optimal power transmission
- up to 630 mm² conductor section for GPH bolt connector and cable lugs up to Ø 52 mm.
- no usage for live working
- no usage with impact driver

delivery:

- in case with foam inlay
- includes wrench socket AF 10, 13, 14, 17, 19, 22, 24
- includes internal hex socket AF 5, 6, 8, 10



Description	Material number
torque amplifier DMV 65	8152450

cable cutter

cable shears 600 mm

- low effort through double lever
- changeable head up to 27 mm \varnothing
- for cable up to 185 mm²



Description	Material number
cable shears 185 mm ²	8154601
substitute head for cable shears 185 mm ²	8154602

Cable shears 600 mm, wire and cable shears

- for copper and alu cable, wire cable and round steel
- for separating of overhead lines with strain relief wire
- changeable head
- 14 mm diameter



Description	Material number
wire-cable shears 150 mm ²	8154600
substitute head for wire-cable shears 150 mm ²	8155600

cable shears with lever transmission

- cutting edges out of tempered Cr-V-Steel
- shock resistant coated grip tubes
- for cutting copper and aluminium cables
- E 2: 250 mm² up to 35 mm diameter
- E 3: 500 mm² up to 50 mm diameter



Description	Material number
cable shears E2 with lever transmission	8155530
substitute head for cable shears E2	8155531
cable shears E3 with lever transmission	8155780
substitute head for cable shears E3	8155781

ratchet cable cutter SH, 260 mm and 297 mm

- one-handed cutting of copper and aluminium cables,
- solid and stranded

Cutting width:

- at 260 mm length cable Ø6 mm to Ø34 mm
- at 297 mm length: cable Ø6 mm to Ø62 mm

- wide blade
- wide feed pawl with 5 teeth
- Knife movable in both directions
- Not suitable for cutting steel wire or steel wire ropes!

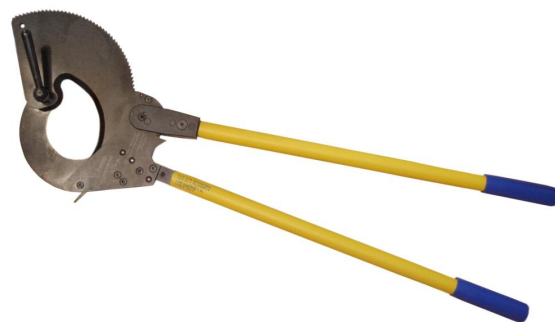


Description	Material number
ratchet cable cutter the 260 mm, Cu 300 mm ² / Al 380 mm ²	8133250
ratchet cable cutter the 297 mm Cu 500 mm ² / Al 500 mm ²	8133280

ratchet cable cutter SH, 870 mm

- two handed ratchet-cable cutter
- for cutting copper and aluminium cables
- also to separating of cable with band steel and lead casing
- cutting performance:
720 mm: opening width 60 mm (ca. 900 mm²)
870 mm: opening width 100 mm (ca. 1200 mm²)

- wide blade
- wide feed pawl with 5 teeth
- blade movable in both directions
- delivery of substitute components possible



Description	Material number
ratchet cable cutter, 870 mm, 1200 mm ²	8134870

cable cutter, end cutter with ratchet K24 / K32

- cutting performance
- length 290 mm: 180 mm² Cu/ 250 mm² Al, max ø 24 mm
- length 306 mm: 250 mm² Cu/ 320 mm² Al, max ø 32 mm
- in every position unlockable
- through drawback spring the cutting edge will jump back to the starting position
- ergonomic, soft handle



Description	Material number
cable cutter K24 length: 290 mm	8136290
cable cutter K32 length: 306 mm	8136310

cable cutter KS 45

- solid construction, for long lifetime
- very smooth-running ratchet drive
- needle bearing eccentric shaft
- turning-blade unlockable in every position
- excellent cutting quality also for finely stranded cables
- for copper- and aluminium-conductors up to 300 mm² at a maximum of ø 45 mm



Description	Material number
cable cutter KS 45 length: 260 mm	8137450

ratchet cable cutter KS 52

- cutting-range electric cable up to 52 mm diameter,
- Cu/ Al cable cross-section up to 500 mm²
- turning blade and cutting plate out of special hardened chrome-nickelsteel
- suitable for thin-sheet sheathed cable
- unsuitable for cable with hardened steel-wires!



Description	Material number
ratchet cable cutter KS 52 length: 325 mm	8137420

ratchet cable cutter KS 62

- cutting-range electric cable up to 62 mm diameter,
- Cu/ Al cable cross-section up to 750 mm²
- turning blade and cutting plate out of special hardened chrome-nickelsteel
- suitable for thin-sheet sheathed cable
- unsuitable for cable with hardened steel-wires!



Description	Material number
ratchet cable cutter KS 62 length: 410 mm	8137410

ratchet cable cutter KS 62 HD

- cutting-range up to 62 mm diameter,
- Cu/ Al cable up to 840 mm²
- splits cable with thin-sheet sheath or steel-sheathing in the outside section
- unsuitable for cable with hardened steel wires!



Description	Material number
ratchet cable cutter KS 62 HD length: 410 mm	8138410

ratchet cable cutter KS 80

- smoothly operating excenter drive
- suitable cable up to 80 mm diameter,
- Cu/ Al cable cross-section up to 1000 mm²
- suitable for cable with thin-sheet sheaths or protection sheathing out of soft steel wire
- unsuitable for hardened steel wires



Description	Material number
ratchet cable cutter KS 80 length: 610 mm	8139610

street lightning

connection set for street lightning cables

content:

- crimping plier for street lightning connector Cu re 10
- 50 pce. crimp-connector 10 mm²
- 34 pce. screwconnector 2,5-16 mm²
- screwdriver insulated AF 2,5
- stripping plier 2,5-16 mm² especially for massive conductor 10+16 mm²
- transport case



Description	Material number
connection set for street lightning cables	8137500
crimping plier for street lightning connector	8137510
crimp-connector 10 mm ² , 50 pieces	8137511
screwconnector 2,5-16 mm ² , 34 pieces	8137512
screwdriver insulated AF 2,5	8137513
stripping plier 2,5-16 mm ²	8137514
transport case	8137515

VDE Battery-operated hydraulic cutting tool ESM 50 ISM

- Insulated and VDE-certified up to 1000V for increased safety when working on potentially live parts
- Cutting of Cu- and Al-cables (stranded and fine-stranded), also armoured cables
- Cutting range maximum diameter 50 mm
- Cutting force 38 kN
- Cutting time 8 to 10 sec.
- Open head, 360° rotatable
- 2-stage hydraulics with fast forward travel and power stroke
- Automatic return after completed operation
- Manual return stop (MRS) for efficient operation
- Time saving with multiple cuts due to innovative opening mechanism
- One-button operating concept for controlling all tool functions
- Fatigue-free working due to balanced centre of gravity
- LED for workspace lighting
- Charging and service indicator
- Weight with battery: 3,10 kg
- Battery: Makita 18 V / 1.5 Ah Li-Ion
- Battery charging time: approx. 15 min.



Description	Material number
Klauke® ESM 50 ISM, Insulated cutting tool, Ø 50mm	8170012
Replacement akku Makita 18V / 1,5Ah	8170100
Replacement akku Makita 18V / 3,0Ah	8170101

VDE Battery-operated hydraulic cutting tool ES 20 ISM

- Insulated and VDE-certified up to 1000V for increased safety when working on potentially live parts
- Cutting of multi-strand Cu and Al cables
- Cutting range maximum diameter 32 mm
- cutting force 15 kN
- Cutting time 8 to 10 sec.
- Slim and open head, 360° rotatable
- Automatic return after completion of the operation
- Manual return stop (MRS) for efficient working
- One-button operating concept to control all tool functions
- Fatigue-free working due to balanced centre of gravity
- LED for workspace lighting
- Charge level and service indicator
- Weight with battery: 2,10 kg
- Battery: Makita 18 V / 1.5 Ah Li-Ion
- Battery charging time: approx. 15 min.



Scope of delivery:
 1 piece cutting tool
 1 piece battery
 1 piece charger
 1 piece storage case

Description	Material number
Klauke® ES 20 ISM, Insulated cutting tool, Ø 20mm	8170001
Replacement akku Makita 18V / 1,5Ah	8170100
Replacement akku Makita 18V / 3,0Ah	8170101

VDE Battery-operated hydraulic cutting tool ES 32 ISM

- Insulated and VDE-certified up to 1000V for increased safety when working on potentially live parts
- Cutting of multi-strand Cu and Al cables
- Cutting range maximum diameter 32 mm
- cutting force 15 kN
- Cutting time 8 to 10 sec.
- Slim and open head, 360° rotatable
- Automatic return after completion of the operation
- Manual return stop (MRS) for efficient working
- One-button operating concept to control all tool functions
- Fatigue-free working due to balanced centre of gravity
- LED for workspace lighting
- Charge level and service indicator
- Weight with battery: 2,10 kg
- Battery: Makita 18 V / 1.5 Ah Li-Ion
- Battery charging time: approx. 15 min.



Scope of delivery:

- 1 piece cutting tool
- 1 piece battery
- 1 piece charger
- 1 piece storage case

Description	Material number
Klauke® ES 32 ISM, Insulated cutting tool, Ø 32mm	8170002
Replacement akku Makita 18V / 1,5Ah	8170100
Replacement akku Makita 18V / 3,0Ah	8170101

VDE Battery-operated hydraulic cutting tool ESM 35 ISM

- Insulated and VDE-certified up to 1000V for increased safety when working on potentially live parts
- Cutting of multi- and fine-strand Cu and Al cables, armoured cables
- Cutting range maximum diameter 35 mm
- cutting force 25 kN
- Cutting time 4 to 6 sec.
- Open head, 360° rotatable
- 2-stage hydraulics with fast forward motion and power stroke
- Automatic return after completion of the operation
- Manual return stop (MRS) for efficient working
- One-button operating concept to control all tool functions
- Fatigue-free working due to balanced centre of gravity
- LED for workspace lighting
- Charge level and service indicator
- Weight with battery: 2,10 kg
- Battery: Makita 18 V / 1.5 Ah Li-Ion
- Battery charging time: approx. 15 min.



Scope of delivery:

- 1 piece cutting tool
- 1 piece battery
- 1 piece charger
- 1 piece storage case

Description	Material number
Klauke® ESM 35 ISM, Isoliertes Schneidwerkzeug, Ø 35mm	8170011
Replacement akku Makita 18V / 1,5Ah	8170100
Replacement akku Makita 18V / 3,0Ah	8170101

VDE Battery-operated hydraulic cutting tool ESM 25 ISM

- Insulated and VDE-certified up to 1000V for increased safety when working on potentially live parts
- Cutting of Al/St ropes (ACSR), round materials (Cu, Al, St) as well as armoured cables, solid structural steel and stay wire
- Cutting range maximum diameter 25 mm overhead line (ACSR, Aldrey) and up to 12 mm high-tensile guy ropes
- cutting force 67 kN
- Cutting time depending on material thickness
- Extremely robust design
- Open head, 360° rotatable
- 2-stage hydraulics with fast forward motion and power stroke
- Automatic return after completion of the work cycle
- Manual return stop (MRS) for efficient working
- One-button operating concept to control all tool functions
- Fatigue-free working due to balanced centre of gravity
- LED for workspace lighting
- Charge level and service indicator
- Weight with battery: 2,90 kg
- Battery: Makita 18 V / 1.5 Ah Li-Ion
- Battery charging time: approx. 15 min.



Scope of delivery:

- 1 piece cutting tool
- 1 piece battery
- 1 piece charger
- 1 piece storage case

Description	Material number
Klauke® ESM 25 ISM, Insulated cutting tool, Ø 25mm	8170010
Replacement akku Makita 18V / 1,5Ah	8170100
Replacement akku Makita 18V / 3,0Ah	8170101

Accu hydraulic cutting tool ESG 55

- For copper and aluminium cables with armouring
- For ACSR ropes
- For round material of aluminium, copper and steel
- Cutting range maximum 55 mm diameter
- cutting force 120 kN
- Cutting time 10 s to 19 s (depending on cross section)
- Closed head (guillotine) with bolt lock, hinged, rotatable
- 2-stage hydraulics with fast forward motion and power stroke
- Automatic return after completion of the operation
- Manual return stop (MRS)
- One-button operating concept to control all tool functions
- Fatigue-free working due to balanced centre of gravity
- LED for workspace lighting
- Charge level and service indicator
- Weight with battery: 8,20 kg
- Battery: Makita 18 V / 4.0 Ah Li-Ion
- Battery: Bosch 18 V / 5.0 Ah Li-Ion
- Battery charging time: approx. 45 min.



Scope of delivery:

- 1 piece cutting tool
- 1 piece battery
- 1 piece charger
- 1 piece storage case

Description	Material number
Klauke® ESG 55 CFM (Makita), cutting tool, Ø 55mm	8170020
Klauke® ESG 55 CFB (Bosch), cutting tool, Ø 55mm	8170021
Replacement akku Makita 18V / 4,0Ah	8170102
Replacement akku Bosch 18V / 5,0Ah	8170103

Accu hydraulic cutting tool ESG 85

- For copper and aluminium cables with light steel armouring
- Cutting range maximum 85 mm diameter
- cutting force 60 kN
- Cutting time depending on material thickness
- Closed head (guillotine), rotatable
- 2-stage hydraulics with fast forward motion and power stroke
- Automatic return after completion of the work cycle
- Manual return stop (MRS)
- One-button operating concept to control all tool functions
- Fatigue-free working due to balanced centre of gravity
- LED for workspace lighting
- Charge level and service indicator
- Weight with battery: 6,80 kg
- Battery: Makita 18 V / 4.0 Ah Li-Ion
- Battery: Bosch 18 V / 5.0 Ah Li-Ion
- Battery charging time: approx. 45 min.



Scope of delivery:

- 1 piece cutting tool
- 1 piece battery
- 1 piece charger
- 1 piece storage case

Description	Material number
Klauke® ESG 85 CFM (Makita), cutting tool, Ø 85mm	8170022
Klauke® ESG 85 CFB (Bosch), cutting tool, Ø 85mm	8170023
Replacement akku Makita 18V / 4,0Ah	8170102
Replacement akku Bosch 18V / 5,0Ah	8170103

Hand-Hydraulic Cable Cutter HS-55

- light and compact
- rotating cutting head (180°) with hinged closure and knife guide
- Fast feed through double tube hydraulics
- automatic pressure limitation
- Operating pressure: 700 bar (70 MPa) or 850 bar (85 MPa)
- cutting force: 43 kN
- max. cable diameter: 50 mm
- Delivery incl. carrying bag



Description	Material number
hand hydraulic cable cutter the HS-50 incl. carrier bag	8148050

Hand-Hydraulic Cable Cutter HS-85

- light and compact
- rotatable cutting head (180°) with special lock
- for opening in any knife position
- with safety device against unintentional opening
- Fast feed through double tube hydraulics
- automatic pressure limitation
- Operating pressure: 700 bar
- cutting force: 60 kN
- max. cable diameter: 85 mm
- Delivery incl. carrying bag



Description	Material number
hand hydraulic cable cutter HS-85 incl. carrier bag	8148085

Hydraulic safety cutting systems

- approved for DIN EN 50110-1 (VDE 0105 part 1) § 6.2.3
- for cutting low and medium voltage cables up to 30 kV
- manufactured according to DIN EN 50340 (VDE 0682 part 661)
- Cutting head: scissors (SSA-95) or guillotine (SSA-120; SSA-85)

Cutting area:

- SSA-85 up to 85 mm diameter
- SSA-95 up to 95 mm diameter
- SSA-120 up to 120 mm diameter

Scope of delivery:

- 1 piece of hydraulic shears
- 1 piece special high pressure hose 10 meters
- 1 piece leakage-free coupling
- 1 piece Foot actuation lever
- 1 piece two-stage hydraulic pump on base frame
- 1 piece transport case



Description	Material number
safety cutting system SSA-85	8117085
safety cutting system SSA-95	8117090
safety cutting system SSA-120	8117120

Hydraulic safety cutting systems

- manufactured according to DIN EN 50340 (VDE 0682 part 661)
- head with quick coupling, 360° rotatable
- Two-stage hydraulics
- Manual return if required
- Sicherheits-Hydraulic hose 10,0 m
- Foot pump, operating pressure 625 bar
- Earthing kit
- Supplied in sheet steel case
- Cutting head open (SSG105, scissors) or closed (SSGG85 and SSGG105, guillotine)

Cutting area:

- SSGG85 up to 85 mm diameter
- SSG105 to 104 mm diameter
- SSGG105 up to 104 mm diameter



Description	Material number
Klauke® SSGG85, safety cutting system with foot pump, 85 mm Ø, guillotine	8170500
Klauke® SSG105, safety cutting system with foot pump, 105 mm Ø, scissors	8170501
Klauke®SSGG105, safety cutting system with foot pump, 105 mm Ø, guillotine	8170502

accu hydraulic safety cutting systems up to 104 mm

- Two-stage hydraulics with fast forward motion and power stroke
- Electronic control
- Multifunction LED for maintenance and charge level indication
- LED display for service intervals after 250 cuts
- Sicherheits-Hydraulic hose 10,0 m
- Operating pressure 625 bar
- Earthing kit
- Cutting time approx. 21 - 40 s
- Battery charging time approx. 60 min.
- Battery: 18 V / 3.3 Ah Li-Ion
- Cutting head open (ESSG105L, scissors) or closed (ESSGG85L, Guillotine)

Cutting area:

- ESSGG85L up to 85 mm diameter
- ESSG105L up to 104 mm diameter



Description	Material number
Klauke® ESSGG85L, guillotine, 85 mm Ø Safety cutting system, incl. accessories	8170510
Klauke® ESSG105L, scissors, 105 mm Ø Safety cutting system, incl. accessories	8170511
Replacement akku 18V / 3,3Ah	8170104

accu hydraulic safety cutting systems up to 120 mm

- Two-stage hydraulics with fast forward motion and power stroke
- Quick motor stop for high user safety
- Electronic control
- Remote control for increased comfort and safety
- Multifunctional display for pressure test, current consumption, service interval
- Sicherheits-Hydraulic hose 10,0 m
- Earthing kit
- Battery charging time approx. 45 min.
- 2 pieces of battery: 18 V / 5.0 Ah Li-Ion (one battery always serves as a replacement)
- Cutting head open (ASSG120SL, scissors) or closed (ASSGG105L, Guillotine)



Cutting area:

- ASSGG105L up to 105 mm diameter
- ASSG120SL up to 120 mm diameter

Description	Material number
Klauke® ASSGG105L, guillotine, 105 mm Ø safety cutting unit, pump	8170520
Klauke® ASSG120SL, scissors, 120 mm Ø safety cutting unit, pump	8170521
Replacement akku Makita 18V / 5,0Ah	8170105

crimping tools

mechanical crimping pliers K 18

- single stroke plier with open C-crimping head
- 360° rotating head
- 2 telescopic lock handles
- length: 78 - 112 cm
- wire end ferrules up to 95 mm²
- Cu-pressing (standard according to VDE 0220) up to 185 mm²
- Al hexagonal compression up to 185 mm²
- Cu-pressing (commercial) up to 240 mm²



Description	Material number
mechanical crimping pliers HM-6D, open C-crimping head	8129000

VDE accu-hydraulic pressing tool EKM 60 ID ISM

- Insulated and VDE-certified up to 1000V for increased safety when working on potentially live parts
- Mandrel pressing, no change of inserts necessary
- Very well suited for compacted conductors
- Especially for fine stranded conductors according to DIN EN 60228
- Pressing range Cu 10 - 240 mm²
- Pressing range Al 50 - 240 mm²
- Stroke / opening width 35.5 mm
- Press force 30 - 60 kN
- Pressing time 2 s (with MRS+) to 7 s (depending on the press cross section)
- Quality assurance by means of optical and acoustic signals
- Closed head, hinged, 360° rotatable
- 2-stage hydraulics
- One-button operating concept to control all tool functions
- Fatigue-free working due to balanced centre of gravity
- LED for workspace lighting
- Charge level and service indicator
- Weight with battery: 2,60 kg
- Battery: Makita 18 V / 1.5 Ah Li-Ion
- Battery charging time: approx. 15 min.



Scope of delivery:

- 1 piece pressing tool
- 1 piece battery
- 1 piece charger
- 1 piece storage case

Description	Material number
Klauke® EKM 60 ID ISM, Insulated pressing tool, 10-240 mm ²	8170031
Replacement akku Makita 18V / 1,5Ah	8170100
Replacement akku Makita 18V / 4,0Ah	8170102

VDE accu-hydraulic pressing tool EKM 60/22 ISM

- Insulated and VDE-certified up to 1000V for increased safety when working on potentially live parts
- For various hexagonal press inserts and applications
- pressing range 6 - 300 mm²
- stroke 17,5 mm
- Press force 60 kN
- Pressing time 2 s (for ARS) to 5 s (depending on the press cross section)
- Quality assurance by means of optical and acoustic signals
- Closed head, hinged, 360° rotatable
- Automatic return after completion of the operation
- Automatic return stop (ARS) for position control at Multiple Pressings
- One-button operating concept to control all tool functions
- Fatigue-free working due to balanced centre of gravity
- LED for workspace lighting
- Charge level and service indicator
- Weight with battery: 3,10 kg
- Battery: Makita 18 V / 1.5 Ah Li-Ion
- Battery charging time: approx. 15 min.



Scope of delivery:

- 1 piece pressing tool
- 1 piece battery
- 1 piece charger
- 1 piece storage case

Description	Material number
accumulator-cutting tools ASE - 45 incl. accumulator, charger and case	8170030
Replacement akku Makita 18V / 1,5Ah	8170100
Replacement akku Makita 18V / 4,0Ah	8170102

Accu-hydraulic pressing tool EK 120/32

- For various Series 13 hexagonal press inserts
- pressing range 16 - 400 mm²
- stroke/opening width: 32 mm
- Press force 120 kN
- Pressing time 7 s to 8 s (depending on press cross section)
- Quality assurance by means of optical and acoustic signals
- Open head, 360° rotatable
- 2-stage hydraulics with fast forward motion and power stroke
- Automatic return after completion of the operation
- Automatic return stop (ARS) for position control at Multiple Pressings
- One-button operating concept to control all tool functions
- Fatigue-free working due to balanced centre of gravity
- LED for workspace lighting
- Charge level and service indicator
- Weight with battery: 6,80 kg
- Battery: Makita 18 V / 4.0 Ah Li-Ion
- Battery: Bosch 18 V / 5.0 Ah Li-Ion
- Battery charging time: approx. 45 min



Scope of delivery:

- 1 piece pressing tool
- 1 piece battery
- 1 piece charger
- 1 piece storage case

Description	Material number
crimping head PK-23, 230 kN incl. coupling plug	8170040
Klauke® EK120/32 CFB (Bosch), pressing tool, 16 - 400 mm ²	8170041
Replacement akku Makita 18V / 4,0Ah	8170102
Replacement akku Bosch 18V / 5,0Ah	8170103

Accu-hydraulic pressing tool EK 120/42

- For various Series 13 hexagonal press inserts
- pressing range 16 - 400 mm²
- stroke/opening width: 42 mm
- Press force 120 kN
- Pressing time 8 s to 9 s (depending on press cross section)
- Quality assurance by means of optical and acoustic signals
- Open head, 360° rotatable
- 2-stage hydraulics with fast forward motion and power stroke
- Automatic return after completion of the work cycle
- Automatic return stop (ARS) for position control at Multiple Pressings
- One-button operating concept to control all tool functions
- Fatigue-free working due to balanced centre of gravity
- LED for workspace lighting
- Charge level and service indicator
- Weight with battery: 7,10 kg
- Battery: Makita 18 V / 4.0 Ah Li-Ion
- Battery: Bosch 18 V / 5.0 Ah Li-Ion
- Battery charging time: approx. 45 min



Scope of delivery:
 1 piece pressing tool
 1 piece battery
 1 piece charger
 1 piece storage case

Description	Material number
Klauke® EK120/42 CFM (Makita), pressing tool, 16 - 400 mm ²	8170042
Klauke® EK120/42 CFB (Bosch), pressing tool, 16 - 400 mm ²	8170043
Replacement akku Makita 18V / 4,0Ah	8170102
Replacement akku Bosch 18V / 5,0Ah	8170103

Mechanical pressing pliers HM-6C for C-shell

- Lifting pliers with head for interchangeable inserts
- extendable locking handles
- Cu-pressing according to DIN 46235 up to 240 mm²
- Cu-pressing (standard) according to VDE 0220 up to 240 mm².
- Al pressing up to 240 mm²



Description	Material number
mechanical crimping pliers HM-6C for C-cup	8129080

Hand-Hydraulic crimping pliers HH-6C for C-shell

- closed press head
- Press head rotatable
- Double piston hydraulics with quick release
- manual rewind
- automatic pressure limitation
- Operating pressure: 700 bar
- stroke opening: 13 mm
- Cu-pressing according to DIN 46235 up to 300 mm²
- Cu-pressing (standard) according to VDE 0220 up to 300 mm².
- Al pressing up to 300 mm²



Description	Material number
hand hydraulic crimping pliers HH-6C for C-cup	8129101
transport case for crimping pliers steel sheet	8129100

Hand-Hydraulic crimping pliers HH-13C for C-shell

- open and rotatable press head
- Double piston hydraulics with fast forward stroke
- manual rewind
- automatic pressure limitation
- Operating pressure 700 bar
- stroke opening: 32 mm
- Cu-pressing according to DIN 46235 up to 300 mm²
- Cu-pressing (standard) according to VDE 0220 up to 400 mm².
- Al pressing up to 300 mm²



Description	Material number
hand hydraulic crimping pliers HH-13C for C-cup	8129095

Hexagonal press inserts for hand and hydraulic tools

Press inserts according to DIN 48083

- for copper compression cable lugs according to DIN 46235
- for connectors according to DIN 46267, part 1
- Press width 5 mm



Description	Material number
Press insert 18 CU-DIN Index number 5, cross-section 6 mm ²	8129300
Press insert 18 CU-DIN Index number , cross-section 10 mm ²	8129301
Press insert 18 CU-DIN Index number 8, cross-section 16 mm ²	8129302
Press insert 18 CU-DIN Index number 10, cross-section 25 mm ²	8129303
Press insert 18 CU-DIN Index number 12, cross-section 35 mm ²	8129304
Press insert 18 CU-DIN Index number 14, cross-section 50 mm ²	8129305
Press insert 18 CU-DIN Index number 16, cross-section 70 mm ²	8129306
Press insert 18 CU-DIN Index number 18, cross-section 95 mm ²	8129307
Press insert 18 CU-DIN Index number 20, cross-section 120 mm ²	8129308
Press insert 18 CU-DIN Index number 22, cross-section 150 mm ²	8129309
Press insert 18 CU-DIN Index number 25, cross-section 185 mm ²	8129310

Hexagonal press inserts for hand and hydraulic tools

Press inserts DIN-like

- for copper press cable lugs
- for connectors
- Press width 5 mm



Description	Material number
Press insert 18 CU-DIN similar Cross section 6 mm ²	8129320
Press insert 18 CU-DIN similar Cross section 10 mm ²	8129321
Press insert 18 CU-DIN similar Cross section 16 mm ²	8129322
Press insert 18 CU-DIN similar Cross section 25 mm ²	8129323
Press insert 18 CU-DIN similar Cross section 35 mm ²	8129324
Press insert 18 CU-DIN similar Cross section 50 mm ²	8129325
Press insert 18 CU-DIN similar Cross section 70 mm ²	8129326
Press insert 18 CU-DIN similar Cross section 95 mm ²	8129327
Press insert 18 CU-DIN similar Cross section 120 mm ²	8129328
Press insert 18 CU-DIN similar Cross section 150 mm ²	8129329
Press insert 18 CU-DIN similar Cross section 185 mm ²	8129330

Hexagonal press inserts for hand and hydraulic tools

Press inserts according to DIN 48083

- for compression cable lugs and connectors according to DIN Al
- for compression cable lugs and connectors Al/Cu (aluminium side)
- Press width 7 mm

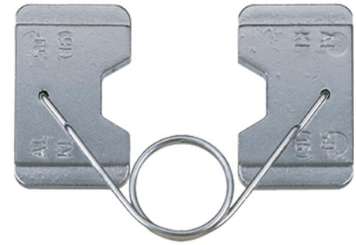


Description	Material number
Press insert 18 Al Index number 10, cross-section 10 mm ²	8129331
Press insert 18 Al Index number 12, cross-section 16-25 mm ²	8129332
Press insert 18 Al Index number 14, cross-section 35 mm ²	8129333
Press insert 18 Al Index number 16, cross-section 50 mm ²	8129334
Press insert 18 Al Index number 18, cross-section 70 mm ²	8129335
Press insert 18 Al Index number 22, cross-section 95-120 mm ²	8129336
Press insert 18 Al Index number 25, cross-section 150 mm ²	8129337
Press insert 18 Al Index number 28, cross-section 185 mm ²	8129338

Hexagonal press inserts for hand and hydraulic tools

Press inserts according to DIN 48083

- for tension-proof compression connectors for Aldrey ropes according to DIN EN 50182
- Press width 7 mm



Description	Material number
Press insert 18 Aldrey Index number 12, cross-section 25 mm ²	8129340
Press insert 18 Aldrey Index number 14, cross-section 35 mm ²	8129341
Press insert 18 Aldrey Index number 16, cross-section 50 mm ²	8129342
Press insert 18 Aldrey Index number 18, cross-section 70 mm ²	8129343
Press insert 18 Aldrey Index number 20, cross-section 95 mm ²	8129344

Round press inserts for hand and hydraulic tools

Round Pressing Press Inserts

- for Cu- and Al-sector conductors
- for 3- and 4-conductor sector cable
- se: solid sector
- sm: sector stranded
- Round spinning width 19,5 mm



Description	Material number
Round press insert 18 / 4.1 sm 10 mm ²	8129350
Round press insert 18 / 5.1 sm 16 mm ²	8129351
Round press insert 18 / 6.3 se 35 mm ² / sm 25 mm ²	8129352
Round press insert 18 / 7.5 se 50 mm ² / sm 35 mm ²	8129353
Round press insert 18 / 9.0 se 70 mm ² / sm 50 mm ²	8129354
Round press insert 18 / 10.5 se 95 mm ² / sm 70 mm ²	8129355
Round press insert 18 / 12.5 se 120 mm ² / sm 95 mm ²	8129356
Round press insert 18 / 14.0 se 150 mm ² / sm 120 mm ²	8129357
Round press insert 18 / 15.8 se 185 mm ² / sm 150 mm ²	8129358
Round press insert 18 / 17.5 se 240 mm ² / sm 185 mm ²	8129359

Hexagonal press inserts for hand and hydraulic tools

Press inserts C-shell

- for copper compression cable lugs according to DIN 46235
- for connectors according to DIN 46267, part 1
- Press width 10 mm (16 to 35 mm²)
- Press width 13 mm (50 mm² and 70 mm²)
- Press width 14 mm (95 mm² and 120 mm²)
- Press width 10 mm (150 to 240 mm²)
- Press width 7 mm Narrow pressing, press 5x (300 mm²)



Description	Material number
Press insert 13C CU-DIN Index number 8, cross-section 16 mm ²	8129500
Press insert 13C CU-DIN Index number 10, cross-section 25 mm ²	8129501
Press insert 13C CU-DIN Index number 12, cross-section 35 mm ²	8129502
Press insert 13C CU-DIN Index number 14, cross-section 50 mm ²	8129503
Press insert 13C CU-DIN Index number 16, cross-section 70 mm ²	8129504
Press insert 13C CU-DIN Index number 18, cross-section 95 mm ²	8129505
Press insert 13C CU-DIN Index number 20, cross-section 120 mm ²	8129506
Press insert 13C CU-DIN Index number 22, cross-section 150 mm ²	8129507
Press insert 13C CU-DIN Index number 25, cross-section 185 mm ²	8129508
Press insert 13C CU-DIN Index number 28, cross-section 240 mm ²	8129509
Press insert 13C CU-DIN Index number 32, cross-section 300 mm ²	8129510

Hexagonal press inserts for hand and hydraulic tools

Press inserts C-shell DIN-similar

- for copper compression cable lugs standard version
- for connectors standard version
- Tubular cable lugs for switchgear connections
- Press width 10 mm (16 to 35 mm²)
- Press width 13 mm (50 mm² and 70 mm²)
- Press width 14 mm (95 mm² to 150 mm²)
- Press width 11 mm (185 mm² to 300 mm²)
- Press width 5 mm Narrow pressing, press 5x (400 mm²)



Description	Material number
Press insert 13C CU-DIN similar Cross section 16 mm ²	8129520
Press insert 13C CU-DIN similar Cross section 25 mm ²	8129521
Press insert 13C CU-DIN similar Cross section 35 mm ²	8129522
Press insert 13C CU-DIN similar Cross section 50 mm ²	8129523
Press insert 13C CU-DIN similar Cross section 70 mm ²	8129524
Press insert 13C CU-DIN similar Cross section 95 mm ²	8129525
Press insert 13C CU-DIN similar Cross section 120 mm ²	8129526
Press insert 13C CU-DIN similar Cross section 150 mm ²	8129527
Press insert 13C CU-DIN similar Cross section 185 mm ²	8129528
Press insert 13C CU-DIN similar Cross section 240 mm ²	8129529
Press insert 13C CU-DIN similar Cross section 300 mm ²	8129530
Press insert 13C CU-DIN similar Cross section 400 mm ²	8129531

Hexagonal press inserts for hand and hydraulic tools

Press inserts C-shell

- for compression cable lugs and connectors according to DIN Al
- for compression cable lugs and connectors Al/Cu (aluminium side)
- Press width 12 mm (10 to 70 mm²)
- Press width 14 mm (95 mm² to 185 mm²)
- Press width 17 mm (240 mm² to 300 mm²)



Description	Material number
Press insert 13C Al Index number 10, cross-section 10 mm ²	8129540
Press insert 13C Al Index number 12, cross-section 16-25 mm ²	8129541
Press insert 13C Al Index number 14, cross-section 35 mm ²	8129542
Press insert 13C Al Index number 16, cross-section 50 mm ²	8129543
Press insert 13C Al Index number 18, cross-section 70 mm ²	8129544
Press insert 13C Al Index number 22, cross-section 95-120 mm ²	8129545
Press insert 13C Al Index number 25, cross-section 150 mm ²	8129546
Press insert 13C Al Index number 28, cross-section 185 mm ²	8129547
Press insert 13C Al Index number 32, cross-section 240 mm ²	8129548
Press insert 13C Al Index number 34, cross-section 300 mm ²	8129549

Hexagonal press inserts for hand and hydraulic tools

Press inserts C-shell

- for press connections according to DIN 48085, part 3 for aluminium steel cables according to DIN EN 50182
- Aluminium pressing
- Press width 12 mm (25 to 70 mm²)
- Press width 14 mm (95 mm² to 120 mm²)



Description	Material number
Press insert 13C Al/St Index number 12, cross-section 25-4 mm ²	8129560
Press insert 13C Al/St Index number 14, cross-section 35-6 mm ²	8129561
Press insert 13C Al/St Index number 16, cross-section 50-8 mm ²	8129562
Press insert 13C Al/St Index number 18, cross-section 70-12 mm ²	8129563
Press insert 13C Al/St Index number 20, cross-section 95-15 mm ²	8129564
Press insert 13C Al/St Index number 25, cross-section 120-20 mm ²	8129565

Hexagonal press inserts for hand and hydraulic tools

Press inserts C-shell

- for press connections according to DIN 48085, part 3 for aluminium steel cables according to DIN EN 50182
- Steel grouting
- Press width 12 mm



Description	Material number
Press insert 13C Al/St Index number 6, cross-sect. 24-4/35-6mm ²	8129570
Press insert 13C Al/St Index number 7, cross-section 50-8 mm ²	8129571
Press insert 13C Al/St Index number 9, cross-sect 70-1/95-15mm ²	8129572
Press insert 13C Al/St Index number 13, cross-section 120-20mm ²	8129573

Hexagonal press inserts for hand and hydraulic tools

Press inserts C-shell

- for press connections according to DIN 48085, part 3 for aluminium steel cables according to DIN EN 50182
- Steel grouting
- Press width 12 mm



Description	Material number
Press insert 13C Aldrey Index number 12, cross-section 25 mm ²	8129550
Press insert 13C Aldrey Index number 14, cross-section 35 mm ²	8129551
Press insert 13C Aldrey Index number 16, cross-section 50 mm ²	8129552
Press insert 13C Aldrey Index number 18, cross-section 70 mm ²	8129553
Press insert 13C Aldrey Index number 20, cross-section 95 mm ²	8129554
Press insert 13C Aldrey Index number 25, cross-section 120 mm ²	8129555
Press insert 13C Aldrey Index number 28, cross-section 150-185mm ²	8129556

Round press inserts for hand and hydraulic tools

Round press inserts C-bowl

- for Cu- and Al-sector conductors
- for 3- and 4-conductor sector cable
- se: solid sector
- sm: sector stranded
- Round spinning width 35 mm



Description	Material number
Round press insert 13C / 4.1 sm 10 mm ²	8129580
Round press insert 13C / 5.1 sm 16 mm ²	8129581
Round press insert 13C / 6.3 se 35 mm ² / sm 16 mm ²	8129582
Round press insert 13C / 7.5 se 50 mm ² / sm 35 mm ²	8129583
Round press insert 13C / 9.0 se 70 mm ² / sm 50 mm ²	8129584
Round press insert 13C / 10.5 se 95 mm ² / sm 70 mm ²	8129585
Round press insert 13C / 12.5 se 120 mm ² / sm 95 mm ²	8129586
Round press insert 13C / 14.0 se 150 mm ² / sm 120 mm ²	8129587
Round press insert 13C / 15.8 se 185 mm ² / sm 150 mm ²	8129588
Round press insert 13C / 17.5 se 240 mm ² / sm 185 mm ²	8129589
Round press insert 13C / 20.3 se 300 mm ² / sm 240 mm ²	8129590
Round press insert 13C / 22.5 sm 300 mm ²	8129591

Hexagonal press inserts for hand and hydraulic tools

Press inserts C-shell

- for copper compression cable lugs according to DIN 46235
- for connectors according to DIN 46267, part 1
- Press width 5 mm



Description	Material number
Press insert 22C CU-DIN Index number 5, cross-section 6 mm ²	8129400
Press insert 22C CU-DIN Index number 6, cross-section 10 mm ²	8129401
Press insert 22C CU-DIN Index number 8, cross-section 16 mm ²	8129402
Press insert 22C CU-DIN Index number 10, cross-section 25 mm ²	8129403
Press insert 22C CU-DIN Index number 12, cross-section 35 mm ²	8129404
Press insert 22C CU-DIN Index number 14, cross-section 50 mm ²	8129405
Press insert 22C CU-DIN Index number 16, cross-section 70 mm ²	8129406
Press insert 22C CU-DIN Index number 18, cross-section 95 mm ²	8129407
Press insert 22C CU-DIN Index number 20, cross-section 120 mm ²	8129408
Press insert 22C CU-DIN Index number 22, cross-section 150 mm ²	8129409
Press insert 22C CU-DIN Index number 25, cross-section 185 mm ²	8129410
Press insert 22C CU-DIN Index number 28, cross-section 240 mm ²	8129411
Press insert 22C CU-DIN Index number 32, cross-section 300 mm ²	8129412

Hexagonal press inserts for hand and hydraulic tools

Press inserts C-shell DIN-similar

- for copper compression cable lugs standard version
- for connectors standard version
- Tubular cable lugs for switchgear connections
- Press width 5 mm



Description	Material number
Press insert 22C CU-DIN similar Cross section 6 mm ²	8129420
Press insert 22C CU-DIN similar Cross section 10 mm ²	8129421
Press insert 22C CU-DIN similar Cross section 16 mm ²	8129422
Press insert 22C CU-DIN similar Cross section 25 mm ²	8129423
Press insert 22C CU-DIN similar Cross section 35 mm ²	8129424
Press insert 22C CU-DIN similar Cross section 50 mm ²	8129425
Press insert 22C CU-DIN similar Cross section 70 mm ²	8129426
Press insert 22C CU-DIN similar Cross section 95 mm ²	8129427
Press insert 22C CU-DIN similar Cross section 120 mm ²	8129428
Press insert 22C CU-DIN similar Cross section 150 mm ²	8129429
Press insert 22C CU-DIN similar Cross section 185 mm ²	8129430
Press insert 22C CU-DIN similar Cross section 240 mm ²	8129431
Press insert 22C CU-DIN similar Cross section 300 mm ²	8129432

Hexagonal press inserts for hand and hydraulic tools

Press inserts C-shell

- for compression cable lugs and connectors according to DIN Al
- for compression cable lugs and connectors Al/Cu (aluminium side)
- Press width 7 mm (10 mm² to 185 mm²)
- Press width 5 mm (240 mm² and 300 mm²)



Description	Material number
Press insert 22C Al Index number 10, cross-section 10 mm ²	8129440
Press insert 22C Al Code number 12, cross-section 16-25 mm ²	8129441
Press insert 22C Al Code number 13, cross-section 35 mm ²	8129442
Press insert 22C Al Code number 16, cross-section 50 mm ²	8129443
Press insert 22C Al Code number 18, cross-section 70 mm ²	8129444
Press insert 22C Al Code number 22, cross-section 95-120 mm ²	8129445
Press insert 22C Al Code number 25, cross-section 150 mm ²	8129446
Press insert 22C Al Code number 28, cross-section 185 mm ²	8129447
Press insert 22C Al Code number 32, cross-section 240 mm ²	8129448
Press insert 22C Al Code number 34, cross-section 300 mm ²	8129449

Hexagonal press inserts for hand and hydraulic tools

Press inserts C-shell

- for press connections according to DIN 48085, part 3 for Al-steel ropes according to DIN EN 50182
- Aluminum Crimping
- Press width 7 mm



Description	Material number
Press insert 22C Al/St Code number 12, cross-section 25-4 mm ²	8129460
Press insert 22C Al/St Code number 14, cross-section 35-6 mm ²	8129461
Press insert 22C Al/St Code number 16, cross-section 50-8 mm ²	8129462
Press insert 22C Al/St Code number 18, cross-section 70-12 mm ²	8129463
Press insert 22C Al/St Code number 20, cross-section 95-15 mm ²	8129464
Press insert 22C Al/St Code number 25, cross-section 120-20 mm ²	8129465

Hexagonal press inserts for hand and hydraulic tools

Press inserts C-shell

- for press connections according to DIN 48085, part 3 for aluminium steel cables according to DIN EN 50182
- Steel grouting
- Press width 5 mm



Description	Material number
Press insert 22C Al/St Code number 6, cross-sect. 25-4/35-6 mm ²	8129470
Press insert 22C Al/St Code number 7, cross-section 50-8 mm ²	8129471
Press insert 22C Al/St Code number 9, cross-sect 70-12/95-15 mm ²	8129472
Press insert 22C Al/St Code number 13, cross-section 120-20 mm ²	8129473

Hexagonal press inserts for hand and hydraulic tools

Press inserts C-shell

- for tensile connections of Aldrey ropes according to DIN EN 50182
- for Al-conductor according to DIN EN 50182, 120 - 185 mm²
- Press width 7 mm



Description	Material number
Press insert 22C Aldrey Code number 12, cross-section 25 mm ²	8129450
Press insert 22C Aldrey Code number 14, cross-section 35 mm ²	8129451
Press insert 22C Aldrey Code number 16, cross-section 50 mm ²	8129452
Press insert 22C Aldrey Code number 18, cross-section 70 mm ²	8129453
Press insert 22C Aldrey Code number 20, cross-section 95 mm ²	8129454
Press insert 22C Aldrey Code number 25, cross-section 120 mm ²	8129455
Press insert 22C Aldrey Code number 28, cross-section 150-185 mm ²	8129456

Round press inserts for hand and hydraulic tools

Round Pressing Press Inserts

- for Cu- and Al-sector conductors
- for 3- and 4-conductor sector cable
- se: solid sector
- sm: sector stranded
- Round spinning width 19,5 mm



Description	Material number
Round press insert 22C / 4.1 sm 10 mm ²	8129480
Round press insert 22C / 5.1 sm 16 mm ²	8129481
Round press insert 22C / 6.3 se 35 mm ² / sm 25 mm ²	8129482
Round press insert 22C / 7.5 se 50 mm ² / sm 35 mm ²	8129483
Round press insert 22C / 9.0 se 70 mm ² / sm 50 mm ²	8129484
Round press insert 22C / 10.5 se 95 mm ² / sm 70 mm ²	8129485
Round press insert 22C / 12.5 se 120 mm ² / sm 95 mm ²	8129486
Round press insert 22C / 14.0 se 150 mm ² / sm 120 mm ²	8129487
Round press insert 22C / 15.8 se 185 mm ² / sm 150 mm ²	8129488
Round press insert 22C / 17.5 se 240 mm ² / sm 185 mm ²	8129489
Round press insert 22C / 20.3 se 300 mm ² / sm 240 mm ²	8129490

burner

handhold for burner

- double valve - handle
- adjustable igniting flame



Description	Material number
handhold for burner	8119100

handhold for burner, piezo

- piezo ignition
- bayonet-clasp for fast burner change
- continuously adjustable flame



Description	Material number
handhold for burner, piezo ignition	8119000

shrink burner

- to shrink shrink-hoses
- up to 50 mm or 130 mm diameter
- consumption 900 g/h or 1200 g/h



Description	Material number
shrink burner 28 mm	8122028
shrink burner 38 mm	8122038

shrink burner, piezo

- to shrink shrink-hoses
- up to 50 mm or 150 mm diameter
- consumption 460g/h, 900 g/h, or 2000 g/h
- piezo ignition



Description	Material number
shrink burner 28 mm piezo ignition	8121028
shrink burner 38 mm piezo ignition	8121038
@shrink burner 38 mm @piezo ignition	8121050

turbo-cyclone burner, piezo

- special burner
- divided gas flow through diagonal channels
- and shaped through the steel burn pipe to a cyclone flame
- vortex flame encases the hole pipe
- gas consumption: 14 mm 170 g/l
- gas consumption: 19 mm 250 g/l
- gas consumption: 25 mm 580 g/l



Description	Material number
@turbo-cyclone burner 19 mm	3123014
turbo-cyclone burner 19 mm	3123018
turbo-cyclone burner 25 mm	3123025

hot air burner 38 mm, piezo

- hot air burner with wind stable hot-air blast
- hot-air blast of 1600 Watt
- burner diameter 38mm
- handgrip with Piezo-Ignition
- gas consumption 125 g/h with 2 bar



Description	Material number
hot air burner 38 mm, piezo	8121138

security regulator for using under ground level

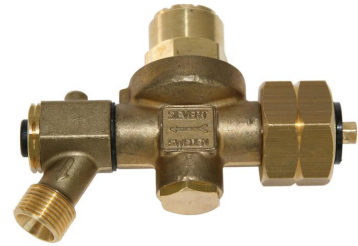
- DVGW tested
- integrated leak gas - testing device
- integrated hose rupture protection
- to use underground
- up to 1,5 kg/h
- Connection 3/8" left



Description	Material number
safety regulator	8120000

pressure regulator

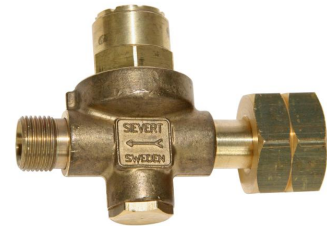
- integrated hose rupture protection
- connection entry: DIN-combi
- connection outlet: 3/8" left side
- flow direction: max. 6 kg/h



Description	Material number
pressure regulator 2.0 bar	3121000

pressure regulator for midget bottle

- flow rate: max. 6 kg/h



Description	Material number
pressure regulator for midget bottle	8121041

hose set

- HD 4x4 mm, complete mounted with R 3/8"-connections



Description	Material number
hose-set 3 m	8122030
hose-set 5 m	8122050

midget bottle

- with base, outlet and hook
- tube connection 3/8" left side



Description	Material number
midget bottle 425 g	8126000

decant connector

- bottle connection DIN combi



Description	Material number
decant connector for midget bottle	8121040

transport case, burner equipment

- solid wood box with steel angles all round
- to storage of components
- e.g. burner, handle, tubes etc.
- incl. holding for midget bottle



Description	Material number
transport case 280 x 180 x 330 mm	8125000

Heat protection blanket

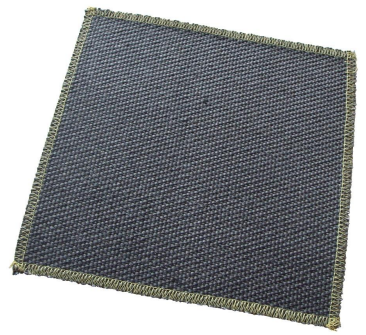
- Heat protection blanket for working and protecting adjacent parts during hot work
- Silicate fabric with inorganic vermiculite coating on both sides
- Cutting edges fenced
- Maximum temperature 1000°C (short-term load up to approx. 1300°C)
- Thickness approx. 1.25 mm
- EN 13501-1



Description	Material number
Heat protection blanket 1000 x 900 mm	8122060
Heat protection blanket 2000 x 900 mm	8122061

flame guard mat

- only for soldering
- asbestos-free

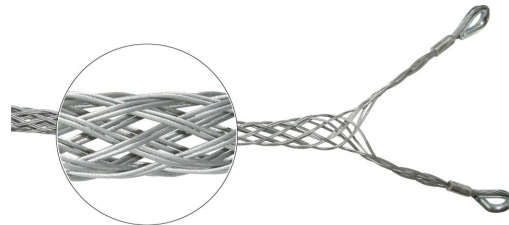


Description	Material number
flame guard mat 250 x 250 mm	3128000

cable-pulley

cable grip

- out of galvanized steel wire
- suitable to lay and pull cables
- construction with eyelet for end of cables
- ca. 1 m length



Description	Material number
cable grip 6-10 mm	8145001
cable grip 10-15 mm	8145002
cable grip 15-20 mm	8145003
cable grip 20-25 mm	8145004
cable grip 25-30 mm	8145011
cable grip 30-40 mm	8145005
cable grip 40-50 mm	8145006
cable grip 50-60 mm	8145007
cable grip 60-70 mm	8145008
cable grip 70-90 mm	8145009
cable grip 90-110 mm	8145010

cable grip for 3 power single-core cables

- consists of 3 grips
- and a joint loop \varnothing 22 mm



Description	Material number
cable grip for 3 power single-core cable 3x 30-40 mm	8147100
cable grip for 3 power single-core cable 3x 40-50 mm	8147200

cable grip, kevlar and stronger plastic braid

- out of galvanized steel wire
- suitable to lay and pull cables
- construction with eyelet for end of cables
- ca. 1 m length

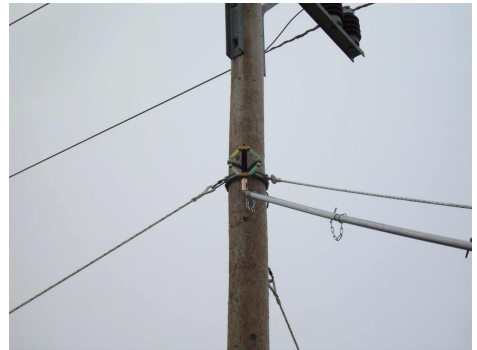


Description	Material number
cable grip 6 - 10,9 mm plaited loop	8145012
cable grip 11 - 15,9 mm plaited loop	8145013
cable grip 16 - 22,9 mm plaited loop	8145014
cable grip 23 - 27,9 mm plaited loop	8145015
cable grip 28 - 36,0 mm plaited loop	8145016
cable grip 6 - 13,0 mm pressed loop	8145017
cable grip 12 - 19,0 mm pressed loop	8145018

pole installation and support rods

pole securing device

- for protection during climbing on wooden poles
- for temporarily protection of slant wooden poles
- for wooden poles up to 12 m height and 12-30 cm diameter
- only to use, if 3 sides are guyed
- if only 2 ground anchor can be used, use trees, buildings or a truck to warrant the third guy.



Description	Material number
pole securing device MP 315 rope length 15 m	8206080

switch rods

switch rod for nominal voltage up to 110 kV

- DIN VDE 0681 part 2
- Do not use during rainfall!
- deep dipping into the construction possible through extension LV
- insulating pipe: fiber-glass reinforced polyester pipe \varnothing 30 mm
- shift pin: complete plastic coated
- end part: anti-slip plastic cap
- immersion depth
- 1030 mm: 135 mm
- 1500 mm: 415 mm
- 2000 mm: 765 mm



Description	Material number
switch rod, 1030 mm, for nominal voltage 30 kV	8201050
switch rod, 1500 mm, for nominal voltage 60 kV	8201500
switch rod, 2000 mm, for nominal voltage 60 kV	8201000

insulating rod type BS for nominal voltage up to 110 kV

- with M 12 thread
- so screw on thread head product nr.: 8 205 000
- additional with hexagon bit
- also suitable for uptake clamps
- for spindle with hexagon earthing and short circuit devices
- insulating pipe : fiber-glass reinforced polyester pipe \varnothing 30 mm yellow
- end part: antislip plastic cap
- immersion depth:
- 1000 mm: 175 mm
- 1500 mm: 475 mm



Description	Material number
insulating rod, 1000 mm, type BS for nominal voltage 30 kV	8205030
insulating rod, 1500 mm, type BS for nominal voltage 30 kV	8205031

switch rod head

- DIN VDE 0681 part 2
- thread M 12
- to screw on hot stick with M12 thread
- steel, complete plastic coated



Description	Material number
switch rod head	8205000

insulating rescue rod up to 36 kV

Suitable for rescuing and recovering injured persons up to a maximum weight of 125 kg.

- for indoor and outdoor installations
- for workshops and other electrical operating areas
- available in 3 standard lengths, other dimensions optional
- up to 36 kV
- according to DIN VDE 0681-1:2016-11



Description	Material number
Rescue Rod up to 36 kV Total length: 1235mm	8148305
Rescue Rod up to 36 kV Total length: 1695mm	8148306
Rescue Rod up to 36 kV Total length: 2195mm	8148307

Fuse Tongs straight version up to 36 kV

- DIN VDE V 0681-3
- up to 36 kV
- for insertion and removal of HH fuses
- large clamping range 30 - 90 mm
- including reduction insert for smaller clamping ranges 30 - 50 mm
- not usable with precipitation



Description	Material number
Fuse Tongs straight up to 36 kV length: 1060 mm, Clamping rang 30-90 mm	8148313
Fuse Tongs straight up to 36 kV length: 1250 mm, Clamping rang 30-90 mm	8148314
Fuse Tongs straight up to 36 kV length: 1500 mm, Clamping rang 30-90 mm	8148315

Fuse Tongs 20° angled version up to 36 kV

- DIN VDE V 0681-3
- up to 36 kV
- 20° angled version
- for insertion and removal of HH fuses
- large clamping range 30 - 90 mm
- including reduction insert for smaller clamping ranges 30 - 50 mm
- not usable with precipitation



Description	Material number
Fuse Tongs angled up to 36 kV length: 1070 mm, Clamping rang 30-90 mm	8148316
Fuse Tongs angled up to 36 kV length: 1250 mm, Clamping rang 30-90 mm	8148317
Fuse Tongs angled up to 36 kV length: 1500 mm, Clamping rang 30-90 mm	8148318

ladders

double-arm pole ladder, with fall protection

High safety through double-arm ladder construction and integrated fall arrester system.
 Moveable fall arrester ensured permanent safety during setup.
 Width, 30 mm deep rungs for slip resistance during climbing
 Ladder system ist tested according to DIN EN 353 CE 0121 , DIN 18799 – 1 ,
 DIN EN ISO 14122 – 4 , DIN EN 131.
 Maximum total load from 150 kg for the ladder system.
 Moveable fall arrester can be mounted and dismantled to the system in every position.
 Moveable fall arrester is not in the scope of delivery.

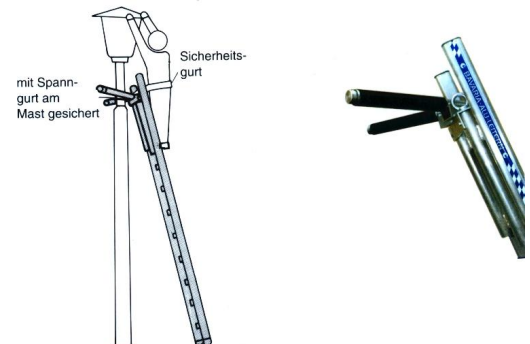
pole diameter: min. 140 mm up to max. 1000 mm
 ladder width: 505 mm
 material: Aluminium



Description	Material number
pole ladder, 3-part, length 8,80 m	8208001
pole ladder, 4-part, length 11,60 m	8208002
pole ladder, 5-part, length 14,40 m	8208003
pole ladder, 6-part, length 17,20 m	8208004
pole ladder, 7-part, length 20,00 m	8208005
moveable fall arrester for double-arm pole ladder	8208006

pole leaning device

- suitable to U-Profile-staves 32 mm wide
- with a distance of 28 cm
- pole diameter from 160 mm up to 600 mm



Description	Material number
pole leaning device universal for pole diameter: 160 - 600 mm	6019000

pole cliff ladder

- light metal pole cliff ladder
- according to VRG 74/DIN 4567
- GS tested
- 5 years europe warranty
- slip-proof square staves 30 x 30 mm
- ladder ends with changeable plastic shoes
- hang-in hook (320 mm diameter) made out of galvanized steel
- chain protection and carabiner hook against accidentally unhooking
- bigger hook diameters on request
- ladder wide inside : 370 mm
- ladder wide outside: 420 mm



Important notice: standard pole cliff ladders not for horizontal usage.

Description	Material number
cliff ladder for masts live working light metal 2,14 m	6017214
cliff ladder for masts live working light metal 2,70 m	6017270
cliff ladder for masts live working light metal 3,26 m	6017326
cliff ladder for masts live working light metal 3,82 m	6017382
cliff ladder for masts live working light metal 4,38 m	6017438

other

torque wrench

- adjustable torque wrench
- with ratchet
- calibrated according to ISO 6789, max. error of measurement +/- 4 %
- delivery with test certificate, licensed through DKD (Deutscher Kalibrier Dienst) (german calibrate service)



Description	Material number
torque wrench 3/8 inch 8-60 Nm	1316000
torque wrench 1/2 inch 20-100 Nm	1316020
torque wrench 1/2 inch 40-200 Nm	1316040

torque wrench

- slim construction, with plastic handles
- interconnect protection through plug-in button at the end of the handle
- click mechanism with slide rollers for long endurance
- calibrated according to ISO 6789, max. error of measurement +/- 4 %
- delivery with test certificate, licensed through DKD (Deutscher Kalibrier Dienst) (german calibrate service)



Description	Material number
torque wrench 3/8 inch 8-70 Nm	1319010
torque wrench 1/2 inch 10-100 Nm	1317020
torque wrench 1/2 inch 20-200 Nm	1317030

lever tensioning device

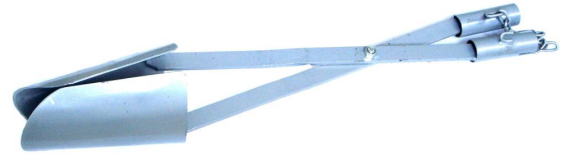
- consist of:
 - lever tension device
 - plate shears
 - bend pliers
 - hammer
 - 100 bails
- for mounting to wooden pole, ferreous pole, concrete pole, alu pole
- for all kind of cross sections (round, triangular, quadratic, oblong, polygonal, ribbed)



Description	Material number
lever tensioning device - set in tool case	8131000

earth scoop

- adjustable chain
- forged, steel
- hole diameter 90 - 200 mm
- with ash handle



Description	Material number
earth scoop 1500 mm length	2133000

substitute handle for earth scoop

- straight, out of ash



Description	Material number
substitute handle for earth scoop	2133001

maintenance sign "put not into operation"

- plastic, matt
- 10 pieces per package



Description	Material number
maintenance sign 7,6 x 14,7 cm (10 pieces)	8350055

maintenance sign "do not switch! work is proceeding!"

- plastic, matt
- 10 pieces per package



Description	Material number
maintenance sign 7,6 x 14,7 cm (10 pieces)	8350040

maintenance sign "Be careful! working at the installation"

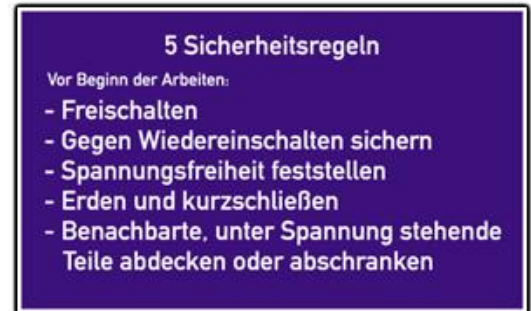
- plastic, matt
- 10 pieces per package



Description	Material number
maintenance sign 7,6 x 14,7 cm (10 piece)	8350060

instruction sign "5 safety rules"

- plastic
- according to BGV A8



Description	Material number
instruction sign 40,0 x 25,0 cm 5 safety rules	8350045

instruction sign "qualified electrician is ..."

- plastic
- according to BGV A8



Description	Material number
instruction sign 40,0 x 20,0 cm	8350050

danger sign "life danger"

- plastic, yellow



Description	Material number
danger sign 24,4 x 20,0 cm	8350065

danger sign "Attention! Only qualified persons may..."

- plastic, yellow

"Only qualified persons may open the distribution cabinet"



Description	Material number
danger sign 7,4 x 21,0 cm	8350020

danger sign "electrical service room"

- plastic, yellow



Description	Material number
danger sign 29,7 x 21,0 cm	8350010

danger sign "earthed and shorted"

- plastic, yellow



Description	Material number
danger sign 29,7 x 21,0 cm	8350015

danger sign "Attention! earthed and shorted"

- plastic, yellow



Description	Material number
danger sign 7,4 x 21,0 cm	8350070

danger sign "system under voltage"

- plastic, yellow



Description	Material number
danger sign 20,0 x 30,0 cm	8350030

danger sign "Attention! electrical installation ...!"

- plastic, yellow

"Attention! electrical installation, keep access free"



Description	Material number
danger sign 12,0 x 21,0 cm	8350025

danger sign "Attention! high-voltage room!"

- plastic, yellow



Description	Material number
danger sign 35,0 x 25,0 cm	8350035

prohibition sign "do not switch"

- plastic



Description	Material number
prohibition sign d= 20,0 cm	8350075



electric-cabinet key

- stabil construction
- also for MV - switchboards
- and cabinets CSIM, BSIG
- meter box and open switchboards
- listing according to sketch from top to bottom



Description	Material number
electric cabinet key, type 1	8121501
electric cabinet key, type 2	8121601
electric cabinet key, type 3	8121500
electric cabinet key, type 4	8121600
electric cabinet key, type 5	8121502
electric cabinet key, type 6	8121506
electric cabinet key, type 7	8121509
electric cabinet key, type 8	8121507
electric cabinet key with adapter for bits, type 9	8121504
electric cabinet key, type 10	8121505
electric cabinet key, type 11	8121503
electric cabinet key, type 12	8121610







Description	Material number
danger sign 29,7 x 21,0 cm	8350010



Description	Material number
danger sign 7,4 x 21,0 cm	8350020



Description	Material number
danger sign 7,4 x 21,0 cm	8350070



Description	Material number
danger sign 12,0 x 21,0 cm	8350025



Description	Material number
danger sign 20,0 x 30,0 cm	8350030



Description	Material number
danger sign 35,0 x 25,0 cm	8350035



Description	Material number
danger sign 29,7 x 21,0 cm	8350015



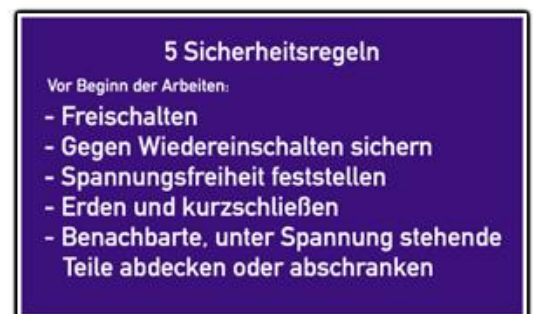
Description	Material number
danger sign 21,0 x 24,5 cm	7427000



Description	Material number
maintenance sign 7,6 x 14,7 cm (10 pieces)	8350040



Description	Material number
maintenance sign 7,6 x 14,7 cm (10 piece)	8350060



Description	Material number
instruction sign 40,0 x 25,0 cm 5 safety rules	8350045

Abt.:	<input type="text"/>
Elektrofachkraft ist:	<input type="text"/>

Description	Material number
instruction sign 40,0 x 20,0 cm	8350050



Description	Material number
danger sign 24,4 x 20,0 cm Hochspannung Lebensgefahr	8350066



Description	Material number
prohibition sign d= 20,0 cm Elektrischer Betriebsraum ...	8350076



Description	Material number
rescue signs 30,0 x 15,0 cm Notausgang	8350077



Description	Material number
safety notice 30,0 x 40,0 cm Arbeiten Hochspannungsanl. (>1kV)	8350078



Description	Material number
safety notice 100,0 x 66,0 cm VDE Bestimmungen	8350079



Description	Material number
safety notice 42,0 x 29,7 cm Unfallverhütungsvorschrift DGUV	8350080

Set of warning and information signs, according to DIN VDE 0105

Set consisting of:

- 1 pcs. VDE-Bestimmungen für den Betrieb von elektrischen Anlagen, plastic, 1000 x 660 mm
- 1 pcs. Merkblatt für Brandbekämpfung und technische Hilfeleistung im Bereich elektrischer Anlage, plastic 620 x 660 mm
- 1 pcs. Anleitung zur Ersten Hilfe, plastic, 410 x 590 mm
- 1 pcs. 5 Sicherheitsregeln, plastic, 120 x 200 mm
- 1 pcs. Warnschild Hochspannung Lebensgefahr, plastic, 240 x 210 mm
- 1 pcs. Verbotsschild Schalten verboten Es wird gearbeitet!, magnetic foil, 210 x 297 mm
- 1 pcs. Warnschild Achtung! Geerdet & kurzgeschlossen, magnetic foil, 210 x 120 mm



Description	Material number
Warning and information sign set for electrical systems	8350086